

ATC-20 & ATC-21

Date: Nov 15, 2023

Time: 8 AM—4:30 PM

Location:

Seabeck Conference
Center
13395 Lagoon Dr NW
Seabeck, WA 98380

We are offering this class
for **FREE**
Lunch will be provided—
Please let Michele know
if you have any dietary
restrictions

Instructor:

Behrooz (Ben) Emam

- Architect
- Professional Civil Engineer
- Former UW Adjunct Professor
- Certified Facility Manager

To Register:

kitsapdem.com/event/atc-20-and-21-2023/

Registration deadline is
November 1, 2023

ATC-20 and ATC-21

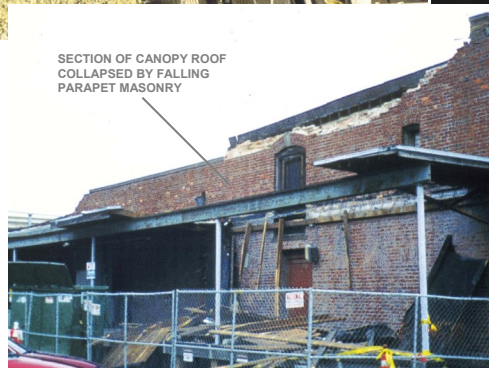
Pre and Post Evaluation of Buildings Affected by Seismic Events



Exterior Private Resident Assessments



Interior Assessments



Exterior Business Assessments

Post-Earthquake Safety Evaluation of Buildings (ATC-20) -

This course is designed to train inspectors, facility managers, architects, engineers, contractors, and other building professionals the methodology for post-earthquake building evaluation. Included in the class are slides of building damage from past earthquakes such as Nisqually and Kobe (Japan).

Rapid Visual Screening of Buildings for Potential Seismic

Hazards (ATC-21) - This course utilizes a rapid sidewalk survey and a scoring methodology to help building owners, facility managers, architects, engineers, inspectors, and other construction professionals to review the condition of a number of different types of buildings before an earthquake and make intelligent decisions about where to focus their upgrade dollars.

KCDEM
Serving the cities and
communities of Kitsap County

Kitsap County Department of Emergency Management
8900 Imperial Way SW Bremerton, WA 98312
Phone: 360-307-5871 · website: www.kitsapdem.com
E-Mail: dem@kitsap.gov